

## Securing Effective Reintegration from Alternative Provision into Mainstream Education

---

### Introduction

Since January 2018 there have been several cases of students refusing to reintegrate from alternative provision and MTS into mainstream settings. There have also been concerns expressed by both primary and secondary colleagues about the transitional support provided to these students.

This has been for a range of reasons including:

1. Student anxiety about the possibility of exclusion from a new placement.
2. A desire to remain with peers and staff in the alternative provision / MTS.
3. Parental anxiety over the move.
4. A lack of support for the reintegration from partner agencies.
5. School concerns about the support available to support the transition.

To this point support - particularly at secondary - has been dependant on the availability of resources and has necessarily been time limited. Most frequently this support has been provided by the alternative provision / MTS. While welcome this support may not address all areas of concern, specifically:

- a. There is not always a belief that the student has an advocate in the process.
- b. There is the perception of a 'slow handover' rather than supported transition.
- c. Support is only in place for the managed move portion of the reintegration.
- d. Parental concerns are not actively addressed through support.

For these reasons there have been reintegration's that have failed as students sabotage them by making poor choices and actively seeking a return to the alternative setting.

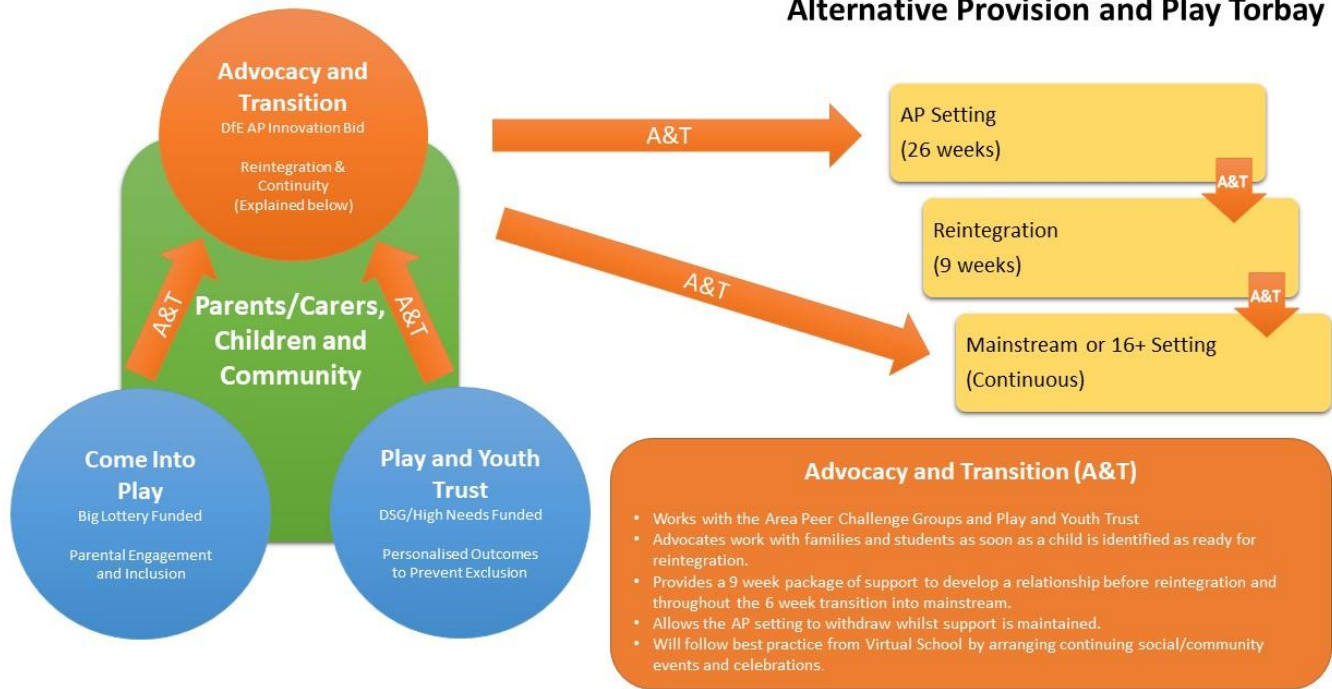
### Proposed Support

It is proposed that the transitional support for students judges to be at risk of failing to reintegrate will be provided by a third party advocacy service.

For students and families the intention is for this work to:

1. Engage with student as soon as they are identified as being 'ready' for reintegration by the Challenging Behaviour Peer Group, the PRP or the AP/MTS.
2. The Peer Groups would also be able to access this support (funded by the on roll school) to support Managed Moves.
3. Support the student through the transition process.
4. Engage with the family and link to work with families in the community such as 'Come Into Play'
5. Provide planned, continuous advocacy for the family and student over the medium term.

## Alternative Provision and Play Torbay



For schools and the local authority the intention is to:

1. Reduce the costs incurred through placements in both commissioned and bespoke AP placements through successful reintegration into mainstream.
2. Remove the perception of AP settings as a 'chosen educational setting' for parents, students and partner organisations.
3. Increase the availability of AP places allowing intervention places to be purchased by schools.

### Pilot Funding

There is no additional funding for this proposal. As with all provision it must be resourced from the existing High Needs budget.

The students currently under consideration for the pilot programme are:

Student ID	M/F	18/19 Yr	Current Setting	Current Funding	Transition Type	Trns Cost	Mainstream Funding
1	F	11	Burton	£19,500	1:1	£3,645	£4,600
2	F	9	Burton	£19,500	2:2	£3,645	£4,600
3	M	9	Burton	£19,500	2:2	£3,645	£4,600
4	F	9	Apricot	£51,000	1:1	£3,645	£4,600
5	F	6	OnTrack	£51,000	1:1	£3,645	£3,300
6	M	4	OnTrack	£51,000	1:1	£3,645	£3,300
				£211,500		£21,870	£25,000

### Recommendation

That the HNRG approves a spend of £22,000 for a pilot to run for 9 weeks for the students listed. Starting as the 12 week provision for 4, 5 and 6 draws to a close and sooner for 1, 2 and 3 to allow transition to mainstream provision from September 2018.